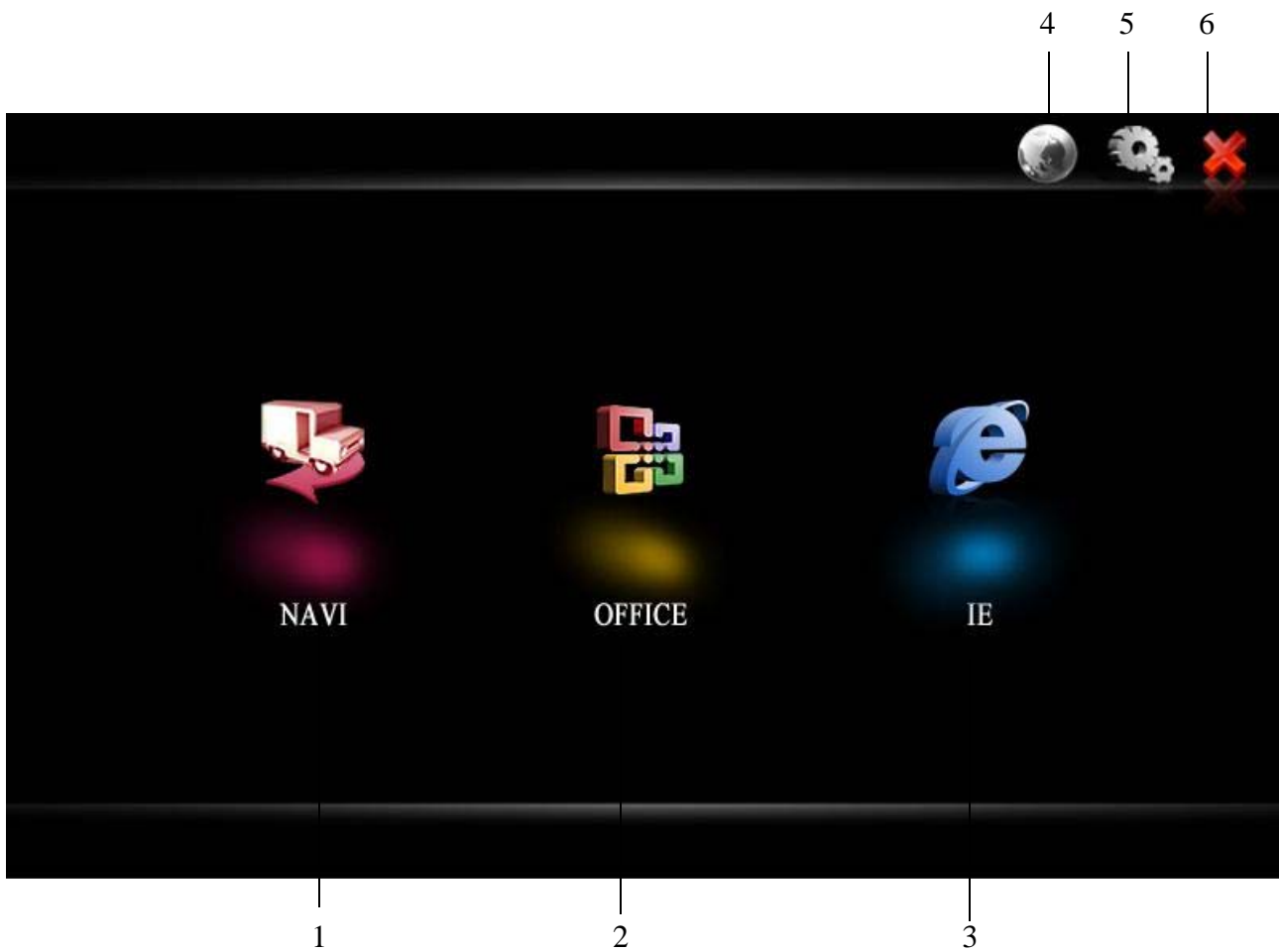


3G internet function



1. Run Navigation software

2. Office function

3. IE

4. Network connections

5. Settings

6. Back to Console

If you use the Modem on the first time on Dynavin unit. Please fill the settings and save, then restart unit and connect the USB modem

Settings

Settings

1 | 2 | 3 | 4

USER NAME APN

PASSWORD DIAL

Select Browser

Select Navigation

5 | 6

1.User name:

2.Password:

3.APN:AccessPointName.

4.DIAL NUMBER:

5.Select Browser:

6.Select Navigation:

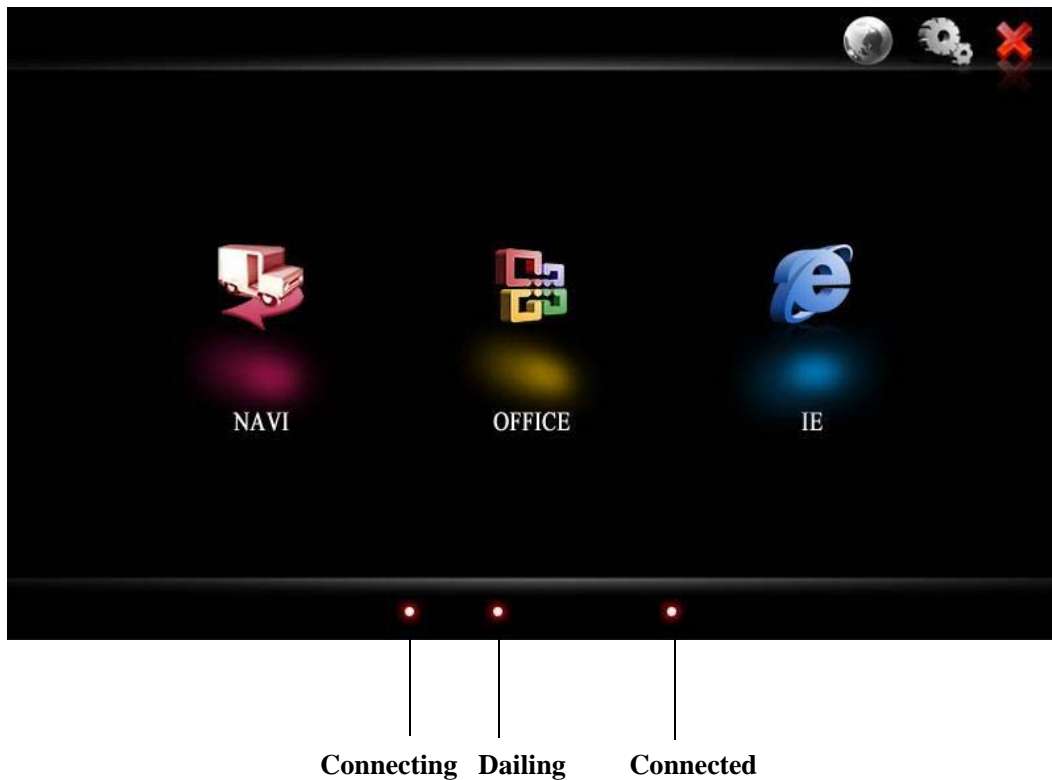
How To Connect to Internet

1, Connect(Keep) the 3G USB MODEM to the Dynavin headunit via special USB external cable

2, Power on the unit

3, Enter GPS menu, run dynavinshell.exe (Autorun)

4, The headunit will connect to internet automatically, The dot below will show the connection



5, After connected the ball icon will become



6, Click



to disconnect